

ACCESSORI

FITTINGS / ZUBEHÖR

L'attenzione di ADR per tutti gli aspetti della costruzione di un veicolo è espressa anche dalla vasta disponibilità di elementi fondamentali per funzionalità e sicurezza al pari degli assali, dei freni e delle sospensioni. Chi ha apprezzato nel tempo l'eccellenza dei prodotti a marchio ADR trova nella gamma di accessori la stessa professionalità e competenza.

ADR's attention to all aspects of the construction of a vehicle is also expressed by the wide availability of fundamental elements for functionality and safety such as axles, brakes and suspensions. Those who have appreciated the excellence of ADR brand products over time find the same professionalism and competence in the range of accessories

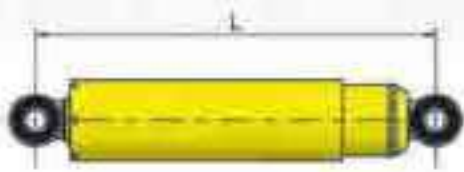
Die Aufmerksamkeit von ADR für alle Aspekte des Fahrzeugbaus drückt sich auch in der breiten Verfügbarkeit grundlegender Elemente für Funktionalität und Sicherheit wie Achsen, Bremsen und Aufhängungen aus. Diejenigen, die die Exzellenz der Produkte der Marke ADR im Laufe der Zeit geschätzt haben, finden die gleiche Professionalität und Kompetenz im Zubehörsortiment.



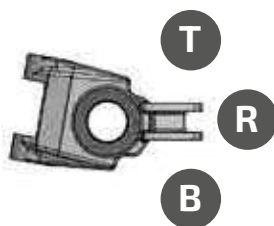


AMMORTIZZATORI

SHOCK ABSORBER / STOSSDÄMPFER



CODICE Code Code	FORZA Force Kraft	L (min. - max.)
	(kg)	(mm)
8215502 (blu / blue / blau)	150	396 - 637
8215501 (rosso / red / rot)	250	
8218301 (giallo / yellow / gelb)	500	



Possibili posizioni di montaggio dell'ammortizzatore

Possible mounting positions shock absorber

Mögliche Einbaulagen Stoßdämpfer



SUPPORTO ADATTATORE PER CILINDRO IDRAULICO

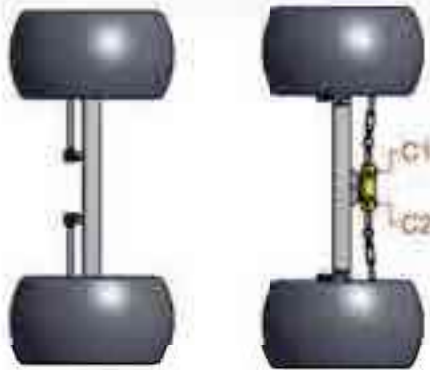
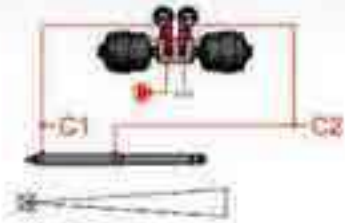
ADAPTER SUPPORT FOR HYDRAULIC CYLINDER
ADAPTER FÜR HYDRAULIKZYLINDERBEFESTIGUNG



COD. 46467

SISTEMA DI CONTROLLO DELLA STERZATA

POWER STEERING SYSTEM / ZWANGSLENKUNGSSYSTEM



STJ5 - HTJ5 type

STB - STQ type

SWB - SWQ type

SXB type

IMPIANTO OLEODINAMICO PER TANDEM

HYDRAULIC SYSTEM FOR TANDEM
HYDRAULISCHE ANLAGE FÜR TANDEM



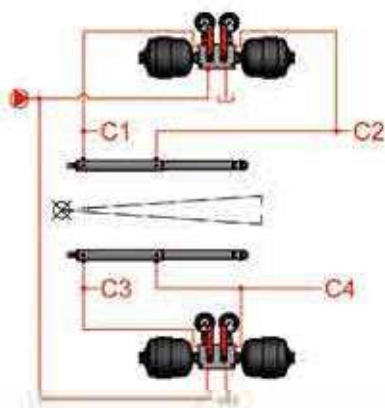
COD. 9ZHY10

IMPIANTO OLEODINAMICO PER TANDEM CON POMPA DI ALIMENTAZIONE

HYDRAULIC SYSTEM FOR TANDEM
HYDRAULISCHE ANLAGE FÜR TANDEM



COD. 9ZHY09



IMPIANTO OLEODINAMICO PER TRIDEM

HYDRAULIC SYSTEM FOR TRIDEM
HYDRAULISCHE ANLAGE FÜR TRIDEM



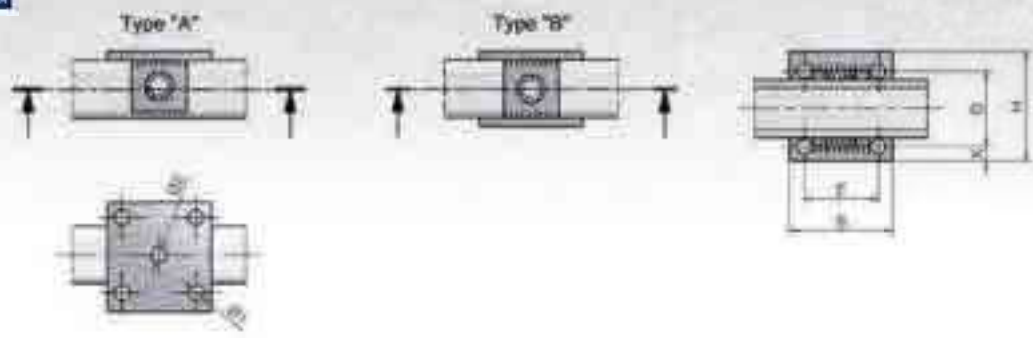
COD. 9ZHY13

IMPIANTO OLEODINAMICO PER TRIDEM CON POMPA DI ALIMENTAZIONE

HYDRAULIC SYSTEM FOR TRIDEM WITH FEEDING PUMP
HYDRAULISCHE ANLAGE FÜR TRIDEM MIT FÜLLUNGSPUMPE



COD. 9ZHY12



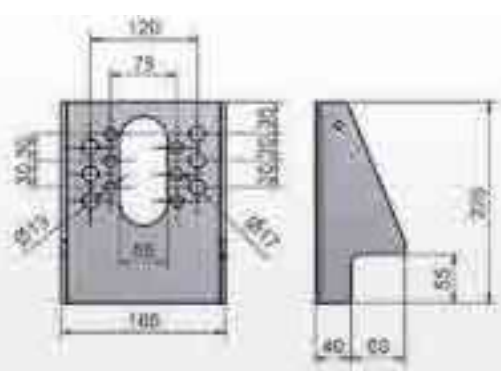
PIASTRE BALESTRA STANDARD

STANDARD FIXING PLATES / STANDARD ACHSPLATTEN

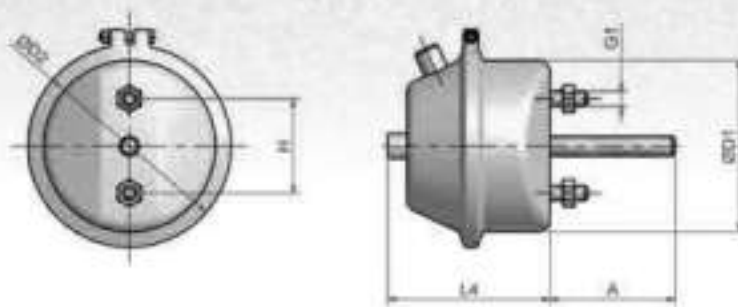
CODICE Code Code		BALESTRA Spring Feder	QUADRO Square Vkt	E x D	B x H	SPESSORE Thickness Dicke	Ø1	Ø2	X
TYPE "A"	TYPE "B"	(mm)	(mm)	(mm)	(mm)	(mm)	(mm)	(mm)	(mm)
A01	B01	70	80	93 x 105	140 x 160	15	21	21	32
A02	B02		90	93 x 115	140 x 170	15	21	21	32
A03	B03		100	93 x 125	140 x 180	15	21	21	32
A04	B04	80	80	103 x 105	150 x 160	15	21	21	32
A05	B05		90	103 x 115	150 x 170	15	21	21	32
A06	B06		100	108 x 130	160 x 190	15	26	21	34
A07	B07	100	90	125 x 117	180 x 180	20	23	24	37
A08	B08		100	128 x 130	180 x 190	20	26	24	34
A09	B09		110	128 x 140	180 x 200	20	26	24	34
A10	B10		120	128 x 150	180 x 210	20	26	24	34
A11	B11	120	130	128 x 160	180 x 220	20	26	24	34
A13	B13		150	128 x 180	180 x 240	20	26	24	34
A14	B14		90	148 x 120	200 x 180	20	26	24	34
A15	B15		100	148 x 130	200 x 190	20	26	24	34
A16	B16		110	148 x 140	200 x 200	20	26	24	34
A17	B17	120	120	148 x 150	200 x 210	20	26	24	34
A18	B18		130	148 x 160	200 x 220	20	26	24	34
A20	B20		150	148 x 180	200 x 240	20	26	24	34

PIASTRA PORTA SOFFIETTO STANDARD

BRACKET FOR BOOSTERS / GRUNDPLATTE



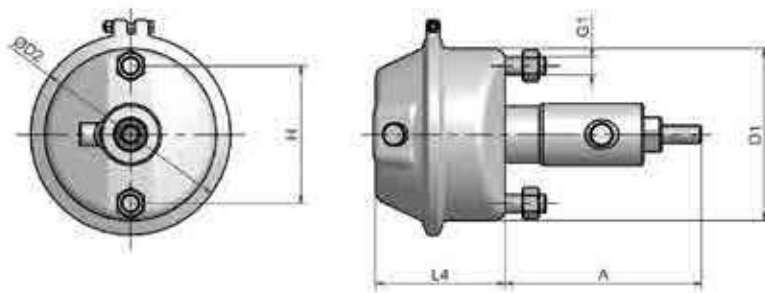
COD. 46106305



CILINDRI A MEMBRANA

BRAKE CHAMBER / MEMBRANZYLINDER

CODICE Code Code	TIPO Type Typ	DATI TECNICI Technical data Technische Daten						CORSA Stroke Hub (mm)	PESO Weight Gewicht (kg)
		ØD1 (mm)	ØD2 (mm)	G1 (mm)	H (mm)	L4 (mm)	A (mm)		
81401	(9")	114	133	M12 x 1,75	76,2	110	185	48	1,82
81402	(12")	121	145	M12 x 1,75	76,2	120	200	73	2,11
81403	(16")	138	163	M12 x 1,75	76,2	130	200	80	2,66
81404	(20")	150	176	M16 x 1,5	120,7	130	200	79	3,07
81405	(24")	161	185	M16 x 1,5	120,7	130	200	78	3,7
81406	(30")	182	208	M16 x 1,5	120,7	140	200	86	4,72



CILINDRI PNEUMATICI - IDRAULICI

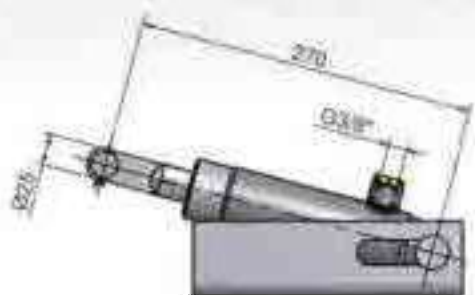
DUAL SUPPLY ACTUATORS / PNEUMATISCHE + HYDRAULISCHE ZYLINDER

CODICE Code Code	TIPO Type Typ	DATI TECNICI Technical data Technische Daten						CORSA Stroke Hub (mm)	PESO Weight Gewicht (kg)
		ØD1 (mm)	ØD2 (mm)	G1 (mm)	H (mm)	L4 (mm)	A (mm)		
81501	12" AIR	123	150	M12 x 1,75	76,2	110	266	73	3,5
	25mm OIL							75	
81502	20" AIR	151	180	M16 x 1,5	120	117	270	78	4,6
	30mm OIL							75	
81503	24" AIR	161	196	M16 x 1,5	120	117	275	78	5
	35mm OIL							75	

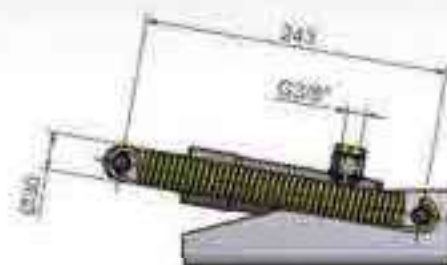


CILINDRO PER FRENATURA IDRAULICA

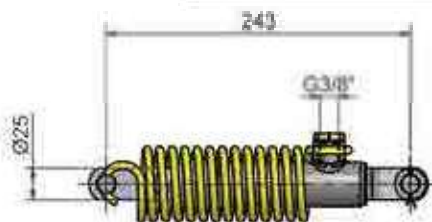
HYDRAULIC RAM FOR BRAKING / *HYDRAULISCHER BREMSZYLINDER*



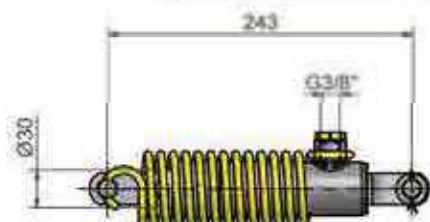
COD. 813107



COD. 813101



COD. 813104

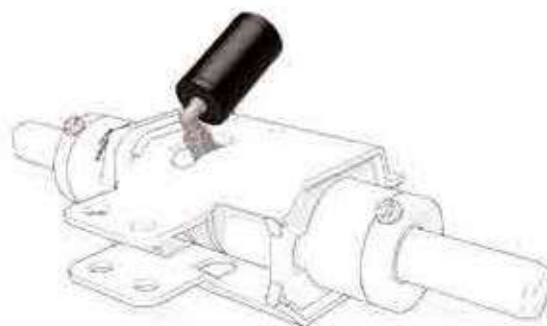


COD. 813102

KIT DI LUBRIFICAZIONE PER CILINDRO STERZANTI

KIT FOR LUBRICATION OF STEERING AXLES' CYLINDER
SCHMIERUNGSKIT FÜR LENKACHSENZYLINDER

COD. 81S100



TAPPO KMETRICO

HUBOMETER / *HUBODOMETER*



Disponibile in versione elettronica o analogica contattando ADR
Available in electronic or analogical version by contacting ADR
Erhältlich in elektronischer oder analogischer Ausführung durch Kontakt mit ADR

CHIAVE PER IL SERRAGGIO DEI TAPPI TEKNOAX

WRENCH FOR THE TIGHTENING OF TEKNOAX'S CAP / *SCHLÜSSEL FÜR TEKNOAX WARTUNG*

	TIPO ASSE Axle type <i>Achstyp</i>	CODICE Code <i>Code</i>
CHIAVE Spanner <i>Schlüssel</i>	4H	990805
	4P - 4R	990806
	4T - 4V	990802
	4Y	990803
LEVA / Lever / <i>Hebel</i>	-	990804





Tyre Inflation Systems

SISTEMA AUTOMATICO DI GONFIAGGIO RUOTE

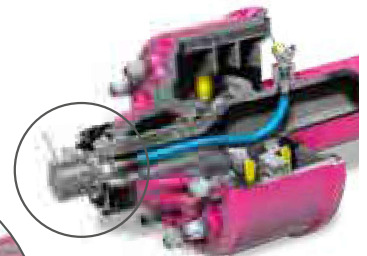
AUTOMATIC SYSTEM FOR WHEEL INFLATING
AUTOMATISCHE REIFENDRUCKREGELANLAGE

RDS / UNIVERSAL

- Collettore universal adattabile a tutti i tipi di assali.
- Guarnizione standard.
- Maintenance free – nessun ingrassatore.
- Collettore disponibile singolo o a doppia linea.
- Universal rotary union for all axle types.
- Standard seal.
- Maintenance free – no grease nipple.
- Available as dual-line and single-line rotary union.
- Universal Drehdurchführung für alle Achstypen.
- Standardabdichtung.
- Wartungsfrei – keine Schmiernippel.
- Verfügbar als Ein- und Zweileiter Drehdurchführung.

RDS / ADR PREMIUM SEAL

- Maintenance free del collettore rotante avvitato su tappo ADR.
- Tappo studiato per una protezione totale dalla polvere e dagli agenti esterni (PTG-kit).
- Installazione rapida e semplice, disponibile nella versione singola o a doppia alimentazione.
- Guarnizione "Premium Long Life".
- Maintenance free rotary union bolted onto the ADR grease cap.
- Ready drilled grease cap for optimized protection against moisture and dust (part of PTG-kit).
- Quick and easy installation, available as dual-line and single-line rotary union.
- Premium long life protection Seal.
- Wartungsfreie Drehdurchführung aufgeschraubt auf die ADR Staubkappe.
- Vorgebohrte Staubkappe für optimierten Schutz gegen Nässe und Staub (Teil des PTG-Sets).
- Schnelle und einfache Montage, verfügbar als Ein- und Zweileiter Drehdurchführung.
- Premium long life Schutzdichtung.



TEKNOAX RFID APP ADR

TEKNOAX RFID APP ADR / TEKNOAX RFID APP ADR

1. Scarica l'APP dal sito ADR www.adraxles.com
2. Togli il tappo dall'assale
3. Avvicina il tuo smartphone per avere le seguenti informazioni
 - Il codice del prodotto
 - L'ordine di produzione
 - Il Link per la sezione del post-vendita

Ora puoi contattare direttamente il servizio ADR o interagire col servizio post-vendita online per le parti diricambio.

1. Download the APP from the website www.adraxles.com
2. Remove the cap from an axle hub
3. Approach with your smartphone to have the following information at hand:
 - The product code
 - The production work order
 - The link to the after-sales section

Now you can contact the ADR service or interact with the ADR after-sales online spare parts service directly.

1. Laden Sie die App über die website www.adraxles.com
2. Entfernen Sie die Kappe von einer Nabe der Achse
3. Halten Sie Ihr Smartphone daran und sofort haben Sie:
 - Die Produktnummer
 - Den Produktionsauftrag
 - Den Link zum Bereich After Sales

Jetzt können Sie sich mit dem ADR-Service in Verbindung setzen oder direct mit dem Online-E.T. Service von ADR "after-sales" sprechen.

